

FLAT PULLS

DECORATIVE HARDWARE SOLUTIONS

11.90" Copland Pull



BPO1-0288SN Satin Nickel
Holes are 11-5/16" center-to-center

4.63" Lombard Pull



BPO2-0102SN Satin Nickel
Holes are 4" center-to-center

4.59" Soft Modern Pull



BPO3-0096FB Flat Black
Holes are 96mm center-to-center

5.85" Soft Modern Pull



BPO3-0128FB Flat Black
Holes are 128mm center-to-center

6.91" North Dalston Pull



BPO1-0160PC Polished Chrome
Holes are 160mm center-to-center

12.61" North Dalston Appliance Pull



BPO1-0305PC Polished Chrome
Holes are 12" center-to-center

4.07" Plaza Pull



BPO1-0096SS Stainless
Holes are 3-3/4" center-to-center

5.30" Plaza Pull



BPO1-0129SS Stainless
Holes are 5-1/16" center-to-center

3.30" Wire Pull



HA02-0074BS Brushed Chrome
Holes are 76mm center-to-center

www.leedo.com 866.GO.LEEDO

©2017 LEEDO CABINERY FLATPULLS 10/17
Printed in the United States of America



NOTE: All photography and illustrations used in this literature sheet should be used for inspiration purposes only. The appearance of actual colors or textures may vary due to the printed publication process. Customers are urged to view an actual sample for a realistic representation of color tones.

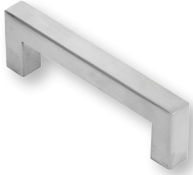
 **Leedo**

We are building solutions.

FLAT PULLS

DECORATIVE HARDWARE SOLUTIONS

3.98" Square Pulls

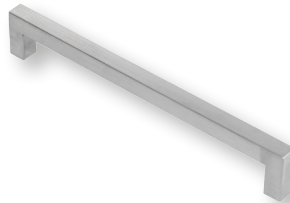


BPO1-0089BS Brushed Steel
Holes are 89mm center-to-center



BPO1-0089PS Polished Steel
Holes are 89mm center-to-center

8.03" Square Pulls



BPO1-0192BS Brushed Steel
Holes are 192mm center-to-center



BPO1-0192PS Polished Steel
Holes are 192mm center-to-center

12.01" Square Pulls



BPO1-0293BS Brushed Steel
Holes are 293mm center-to-center



BPO1-0293PS Polished Steel
Holes are 293mm center-to-center

www.leedo.com 866.GO.LEEDO

©2017 LEEDO CABINERY FLATPULLS 10/17
Printed in the United States of America



 **Leedo**

We are building solutions.

NOTE: All photography and illustrations used in this literature sheet should be used for inspiration purposes only. The appearance of actual colors or textures may vary due to the printed publication process. Customers are urged to view an actual sample for a realistic representation of color tones.