

ROUND BAR PULLS

DECORATIVE HARDWARE SOLUTIONS

5.32" Round Bar Pull



*BP06-0096BCH Bronze Copper Highlights
Holes are 96mm center-to-center*

5.32" Round Bar Pull



*BP06-0096PC Polished Chrome
Holes are 96mm center-to-center*

5.32" Round Bar Pull



*BP06-0096SS Stainless
Holes are 96mm center-to-center*

5.75" Round Bar Pull



*BP02-0096SN Satin Nickel
Holes are 96mm center-to-center*

7.01" Round Bar Pull



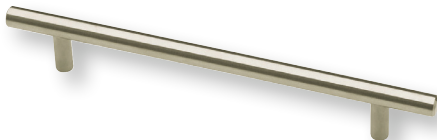
*BP02-0128SN Satin Nickel
Holes are 128mm center-to-center*

7.40" Round Bar Pull



*BP06-0128BCH Bronze Copper Highlights
Holes are 128mm center-to-center*

7.40" Round Bar Pull



*BP06-0128SS Stainless
Holes are 128mm center-to-center*

7.40" Round Bar Pull



*BP06-0128PC Polished Chrome
Holes are 128mm center-to-center*

9.53" Round Bar Pull



*BP02-0196SN Satin Nickel
Holes are 196mm center-to-center*

www.leedo.com 866.GO.LEEDO

©2017 LEEDO CABINERY ROUND BAR PULLS 10/17
Printed in the United States of America



 **Leedo**

We are building solutions.

NOTE: All photography and illustrations used in this literature sheet should be used for inspiration purposes only. The appearance of actual colors or textures may vary due to the printed publication process. Customers are urged to view an actual sample for a realistic representation of color tones.