

shown in Java

MIDWAY

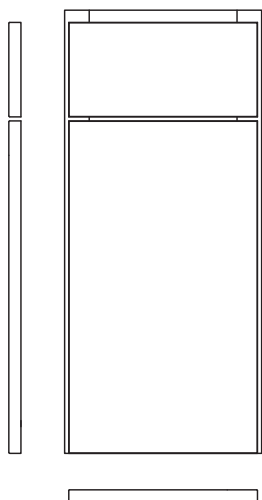
THERMOFOIL DOOR STYLE

FRAMED CONSTRUCTION / FULL OVERLAY

The simple clean lines of our thermofoil door styles create a clean look that works in almost any design or décor. Our thermofoil door styles are created through an intense heat and pressure bonding process where rigid vinyl is applied to a sculpted fiberboard to provide a uniform and durable finish.

Features and benefits

- 3D laminate slab door with decreased reveal between door and drawer front
- 5/8" thick melamine-backed doors and drawer fronts
- Solid wood frame finished to match
- Durable and easy to clean
- Full overlay
- Hardware is required



Available in the following colors



*Only the door and drawer front material is high gloss.

www.leedo.com 866.GO.LEEDO

©2019 LEEDO CABINETRY MIDWAYLITSHEET 03/19
Printed in the United States of America

NOTE: All photography and illustrations used in this literature sheet should be used for inspiration purposes only. The appearance of actual colors or wood grains may vary due to the printed publication process. Customers are urged to view an actual sample for a realistic representation of wood grains and color tones.



 **Leedo**
We are building solutions.